

**10<sup>th</sup> AFAF CAA4 2013**

# **Women's work experience and Empowerment in fisheries**

**2<sup>nd</sup>, may, 2013**

**YEO, MYOUNG HEE(Gangwondo Women & Family Research Institute)**

# Contents

**1. General statistics of women in fisheries**

**2. Women's work experience**

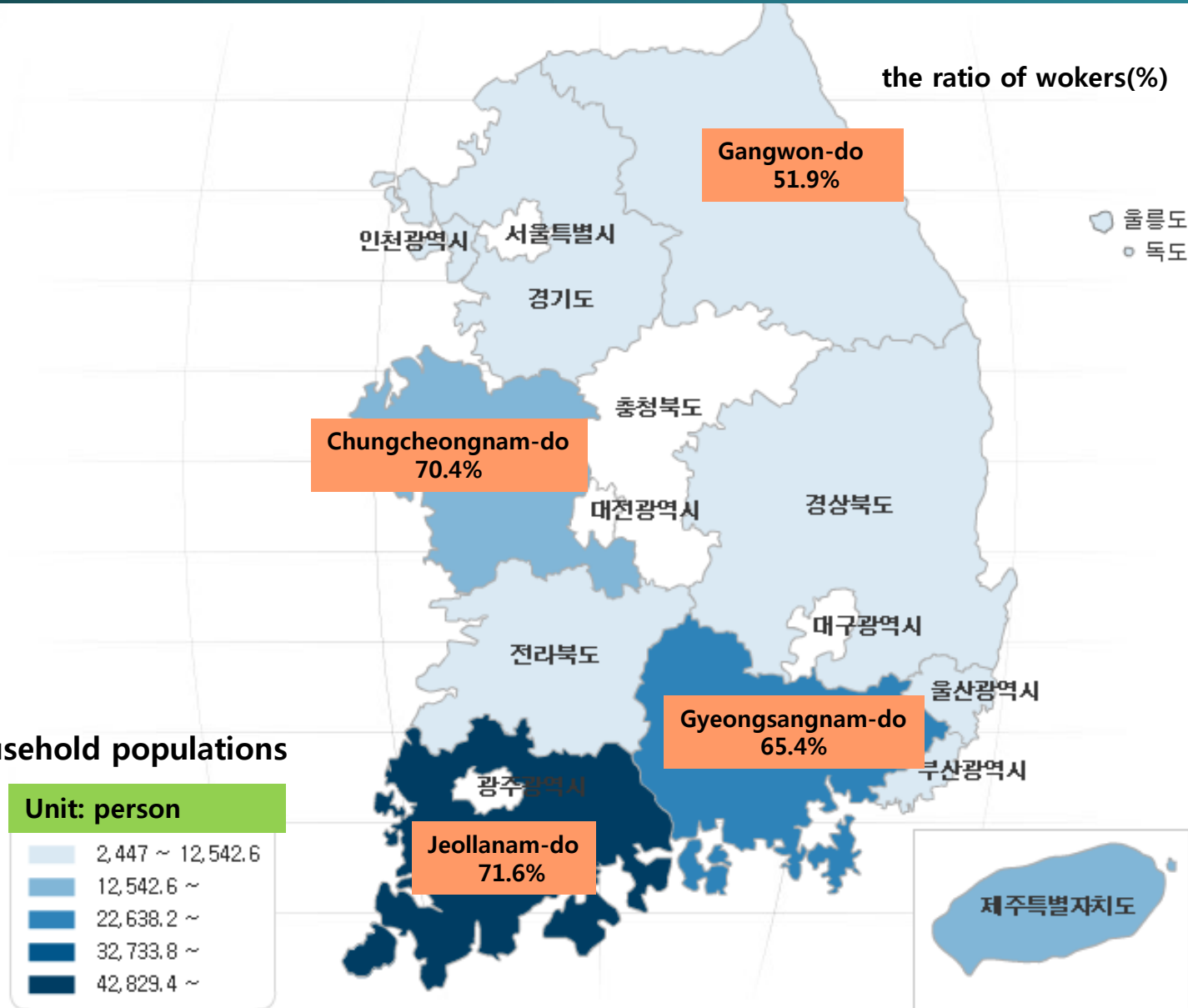
**3. Suggestions for women's empowerment**

**1.**

**General  
statistics of  
women in  
fisheries**

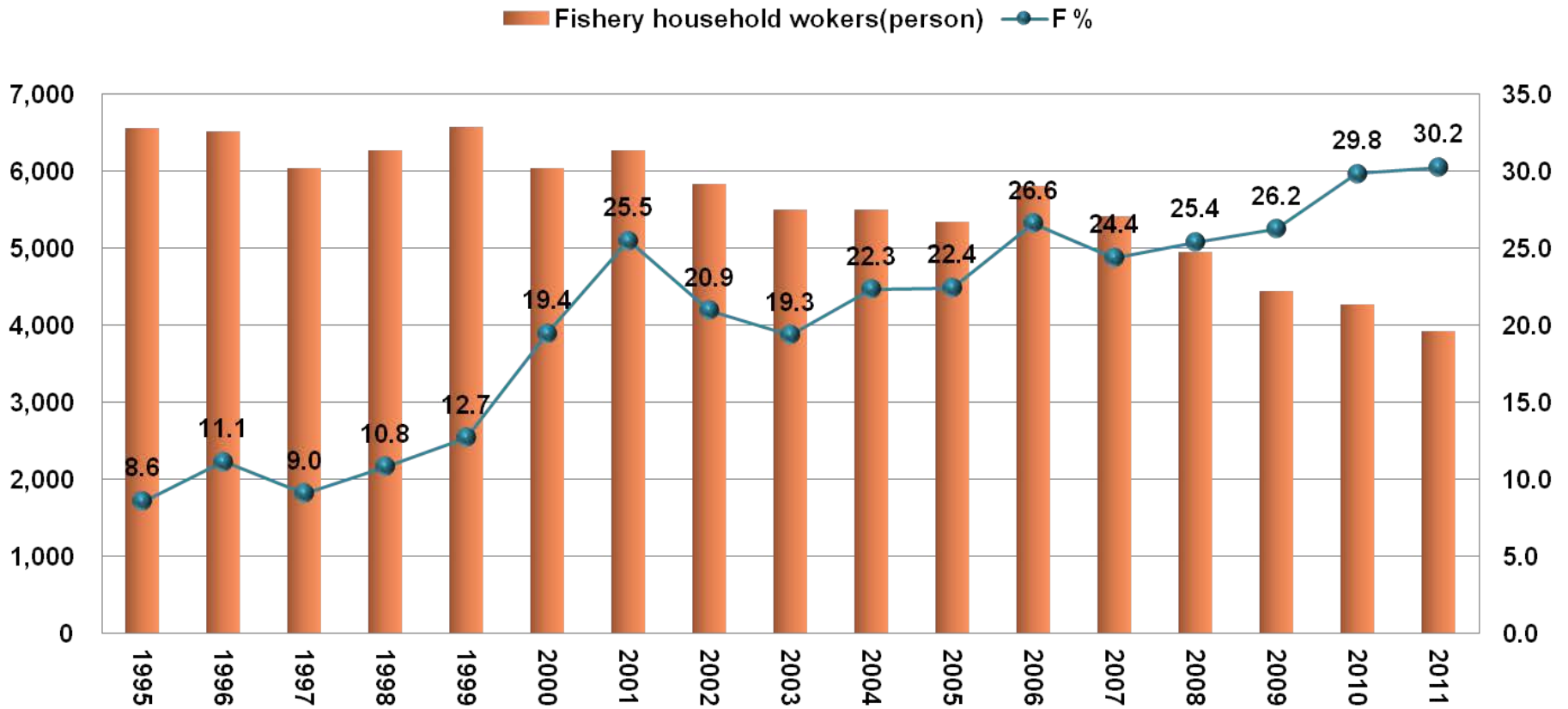
# 1-1. Fishery household population & workers

(National Statistical Office, Fishery Household Economy Survey, 2010)



# 1-2. Fishery household workers & Female workers(Gangwon)

(National Statistical Office, Fishery Household Economy Survey, 2010)

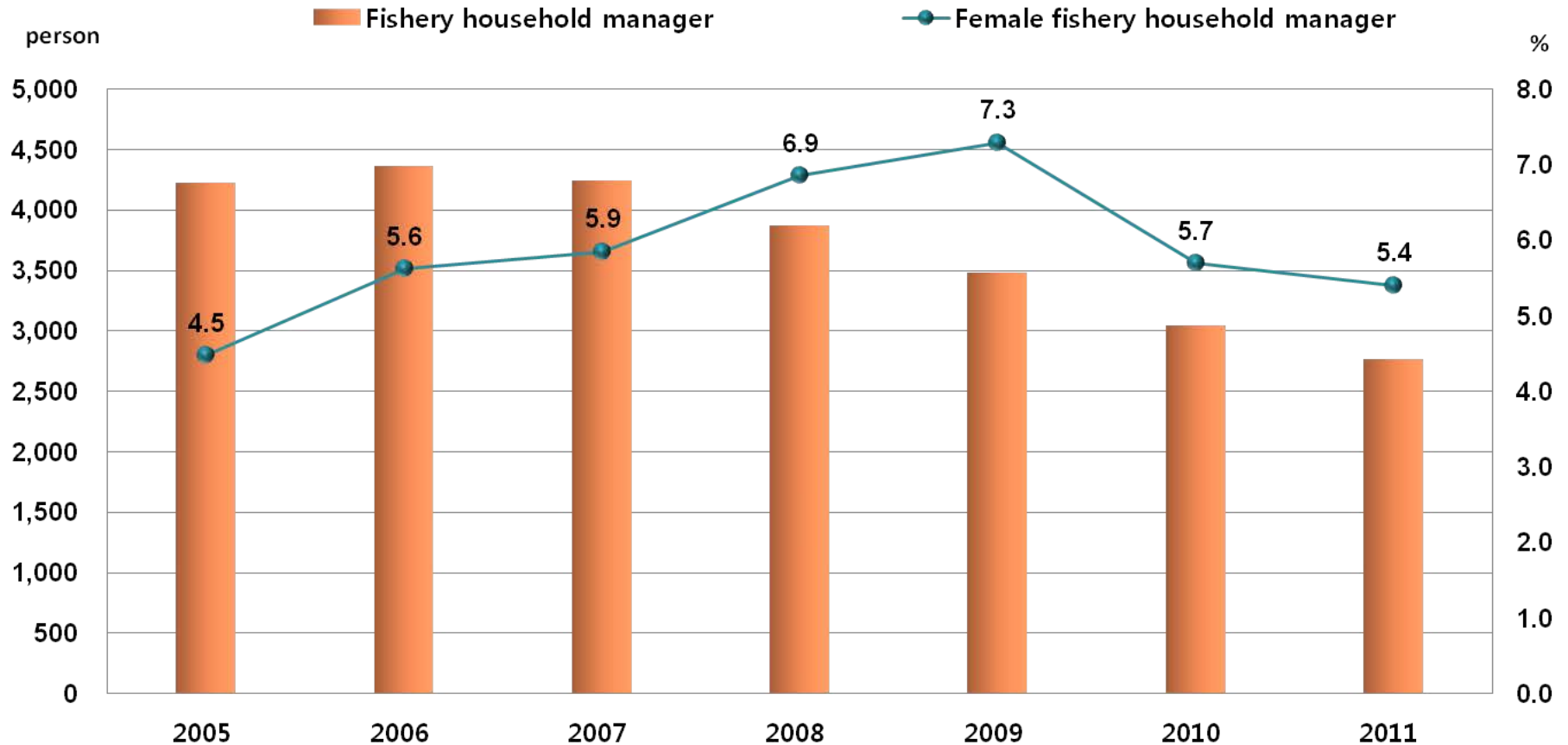


○ Female fishery household workers(2011) 1,182 out of 3,910 persons, 30.2%

○ F% 21.6%P ↑(1995~2011)

# 1-3. Fishery household manager (Gangwon)

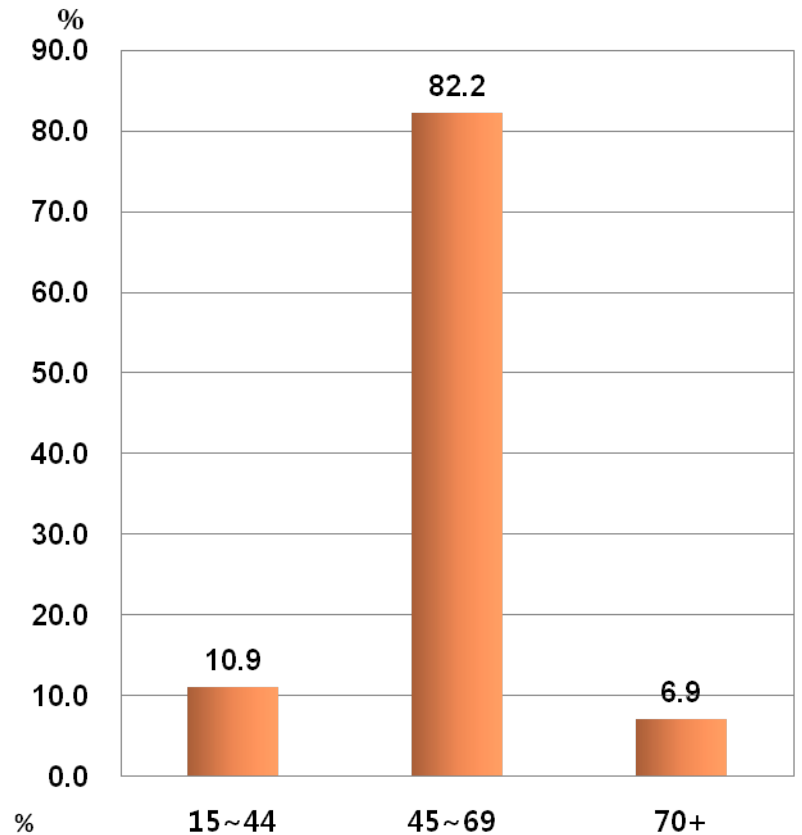
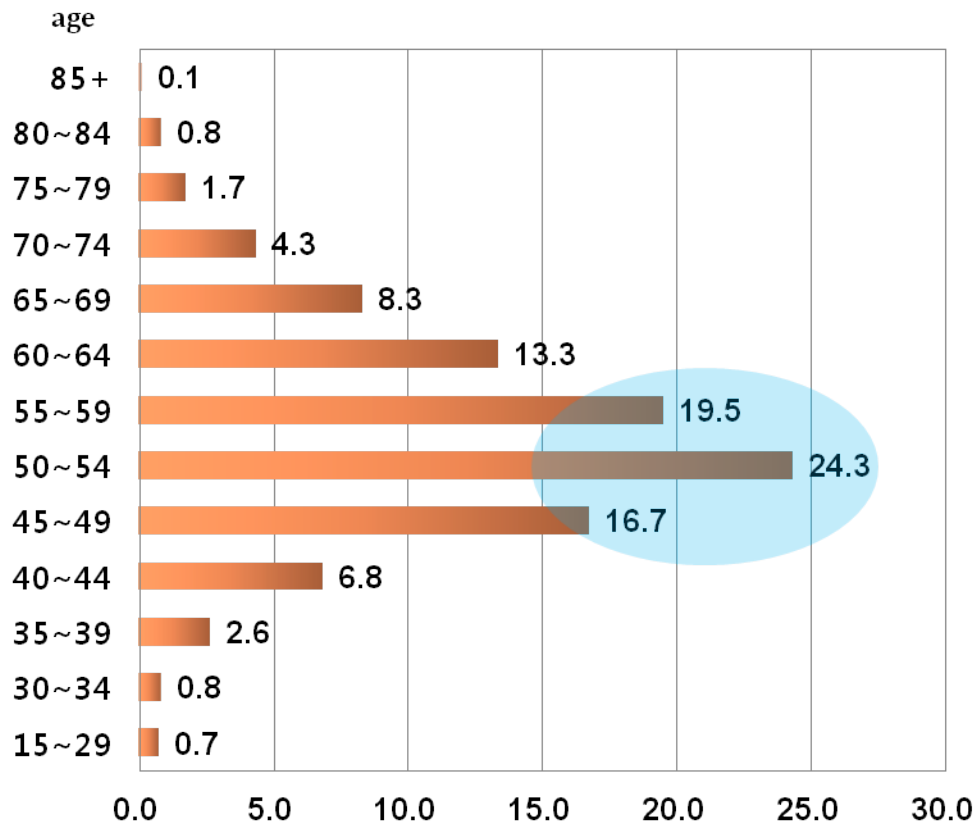
(National Statistical Office, Fishery Household Economy Survey, 2010)



○ Female fishery household manager reached its peak in 2009 and has been decreasing up to now

# 1-4. Female marine fishery household workers by age (Gangwon)

(National Statistical Office, Fishery Household Economy Survey, 2011)



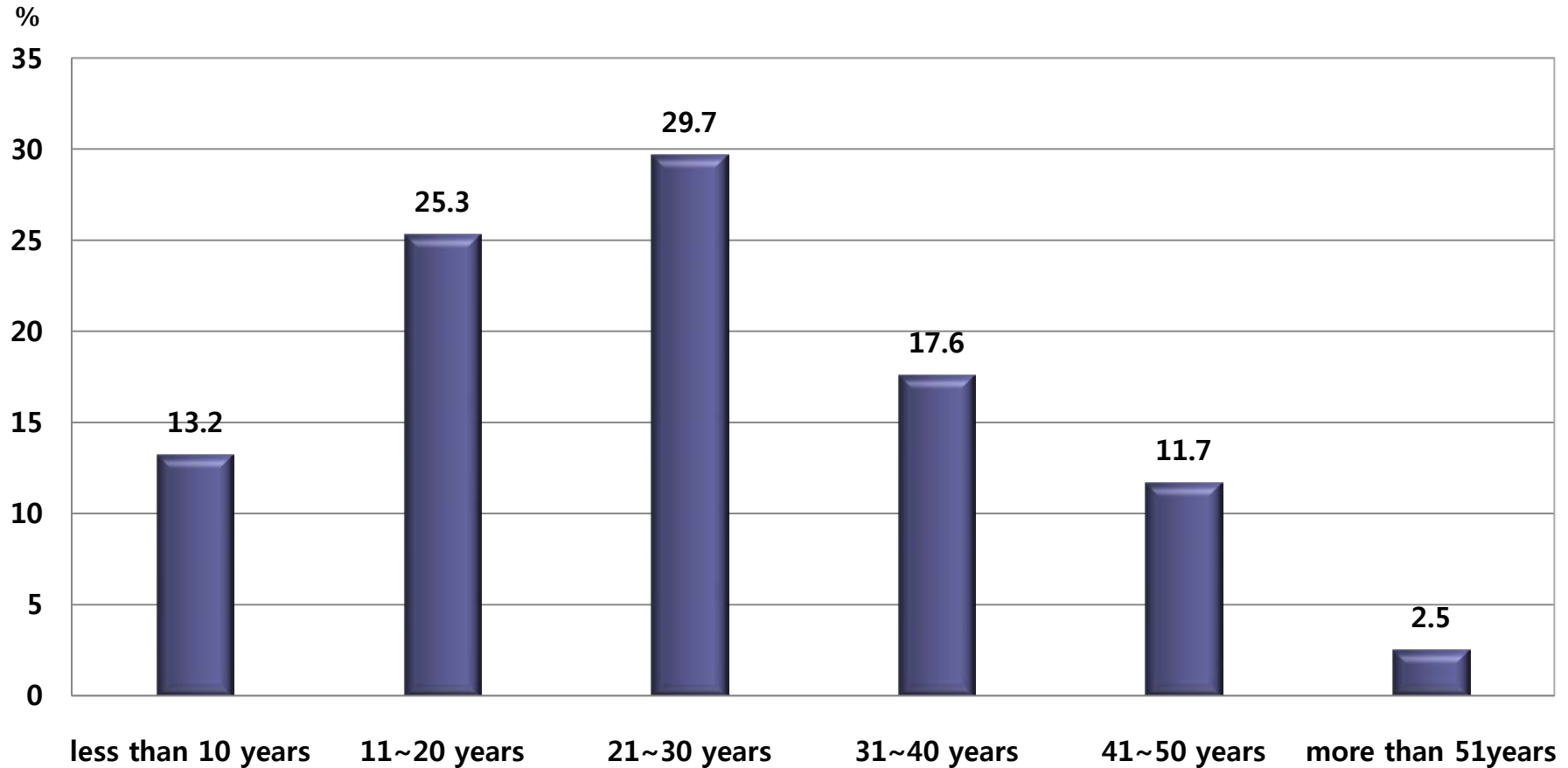
○ more than 80% out of all female workers are densely populated from 45 to 69 years old

**2.**

**Women's  
work experience**

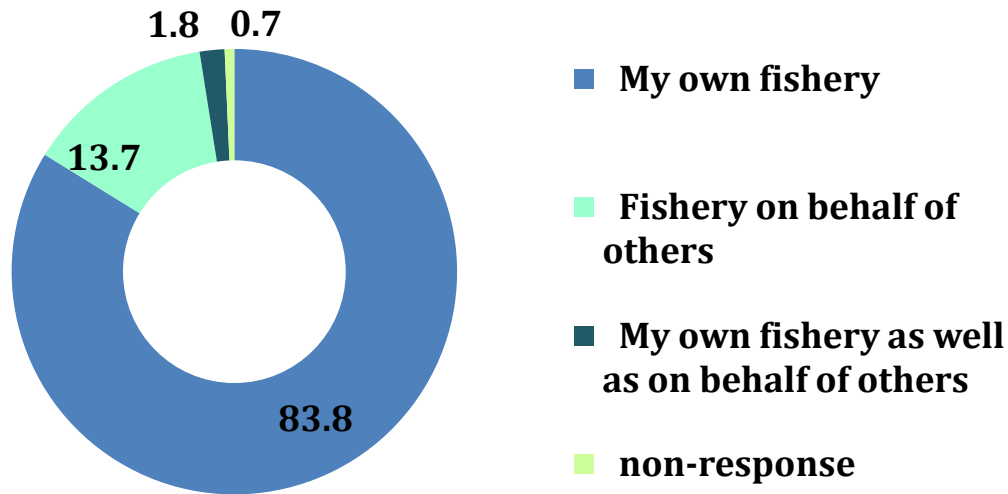


# 2-1. Working period

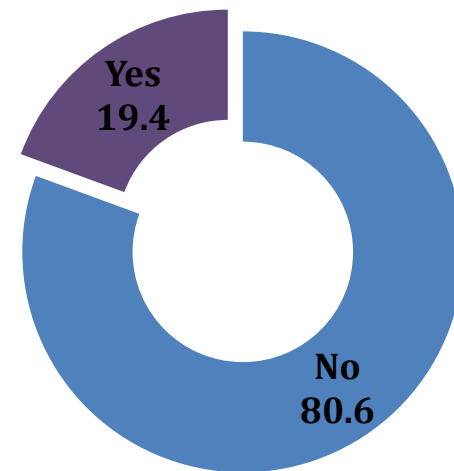


○ More than 60% of female workers have been working for over 20 years

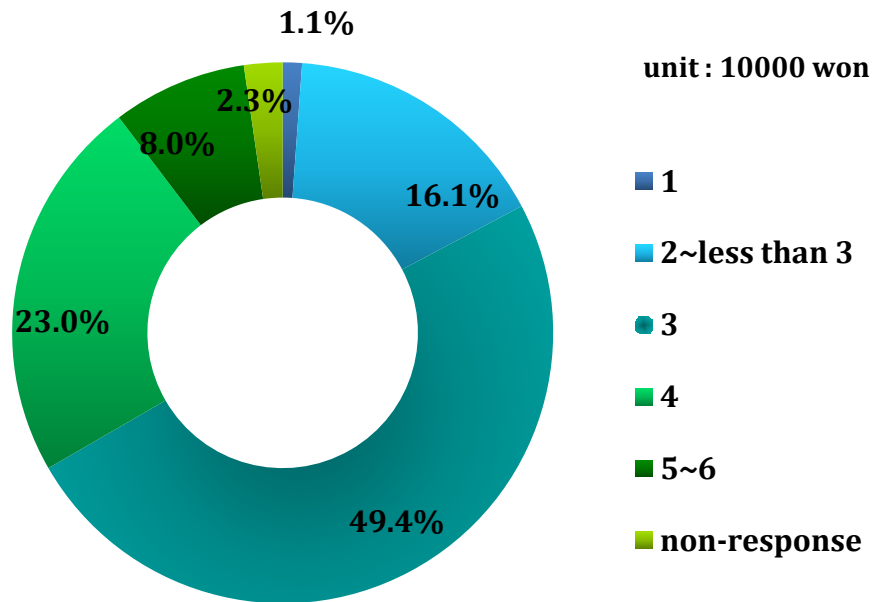
# 2-2. Types of employment



Do you have an another job?



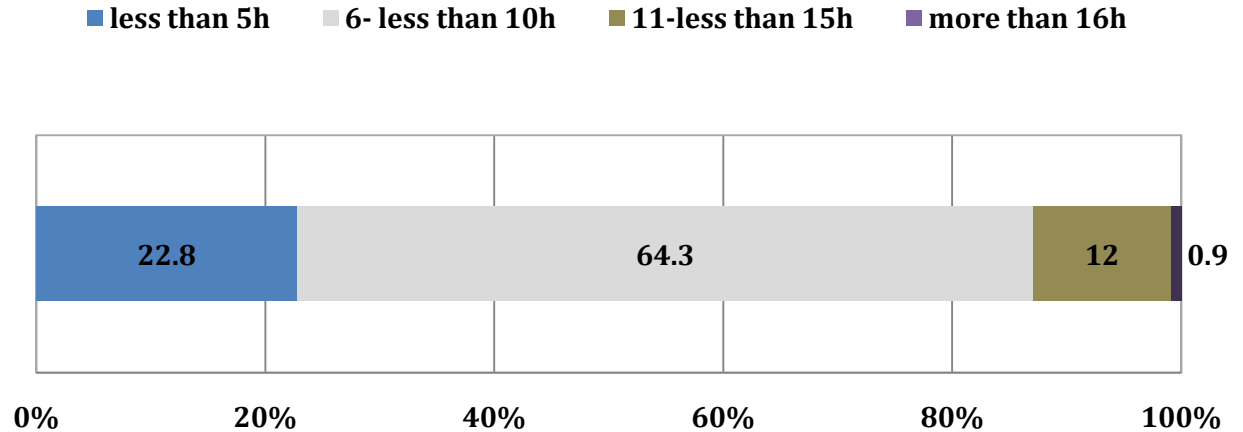
## 2-3. Average daily wage (fishery on behalf of others)



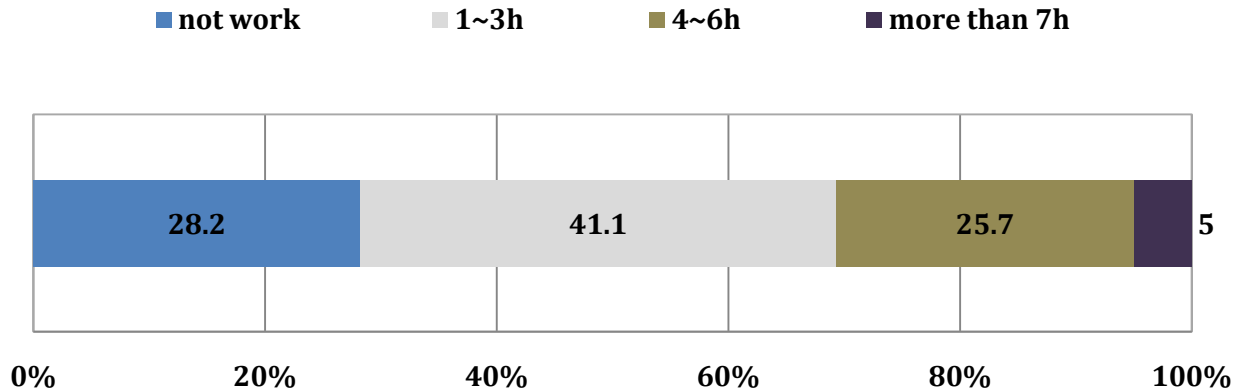
- average daily wage : 33,000won
- the range of average daily wage: 10,000 ~ 60,000 won
- repair and mend fishing gear, prepare and clean up for fishing

# 2-4. Hours of work(per day)

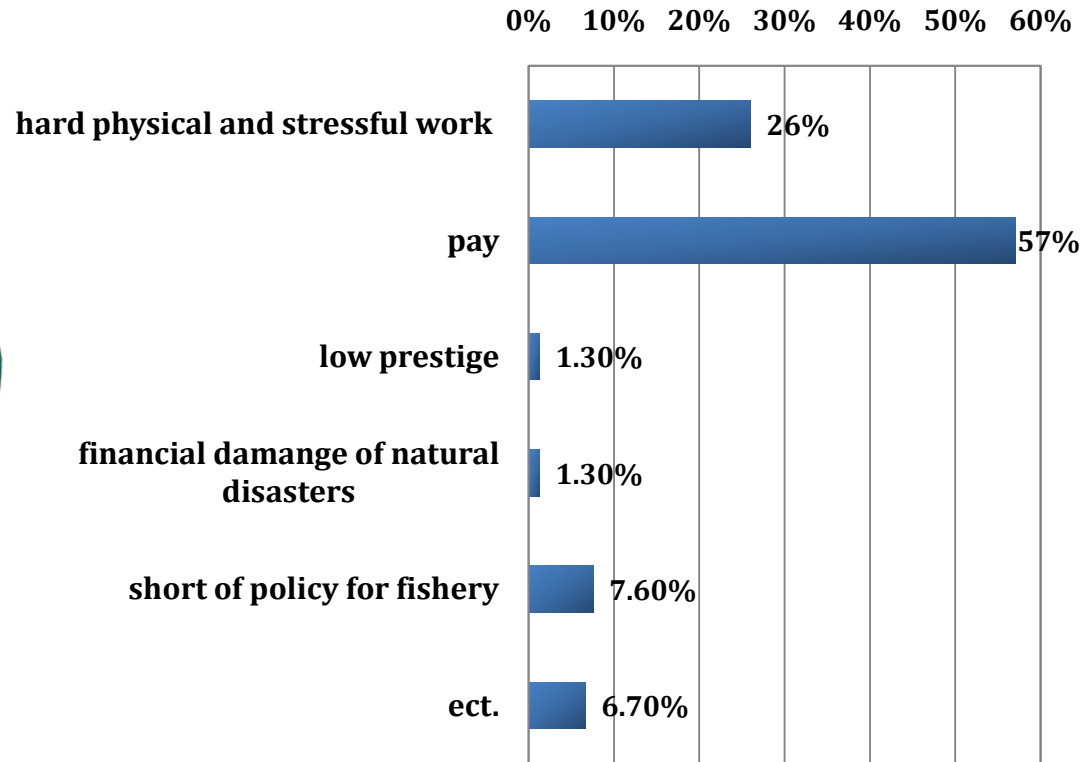
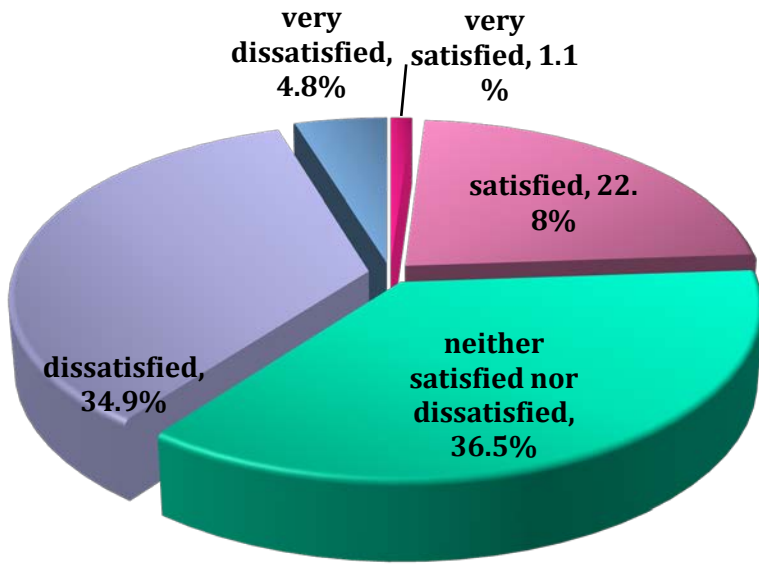
Peak season  
Average : 7.56h



lean seasons  
Average : 2.44h



# 2-5. Job satisfaction

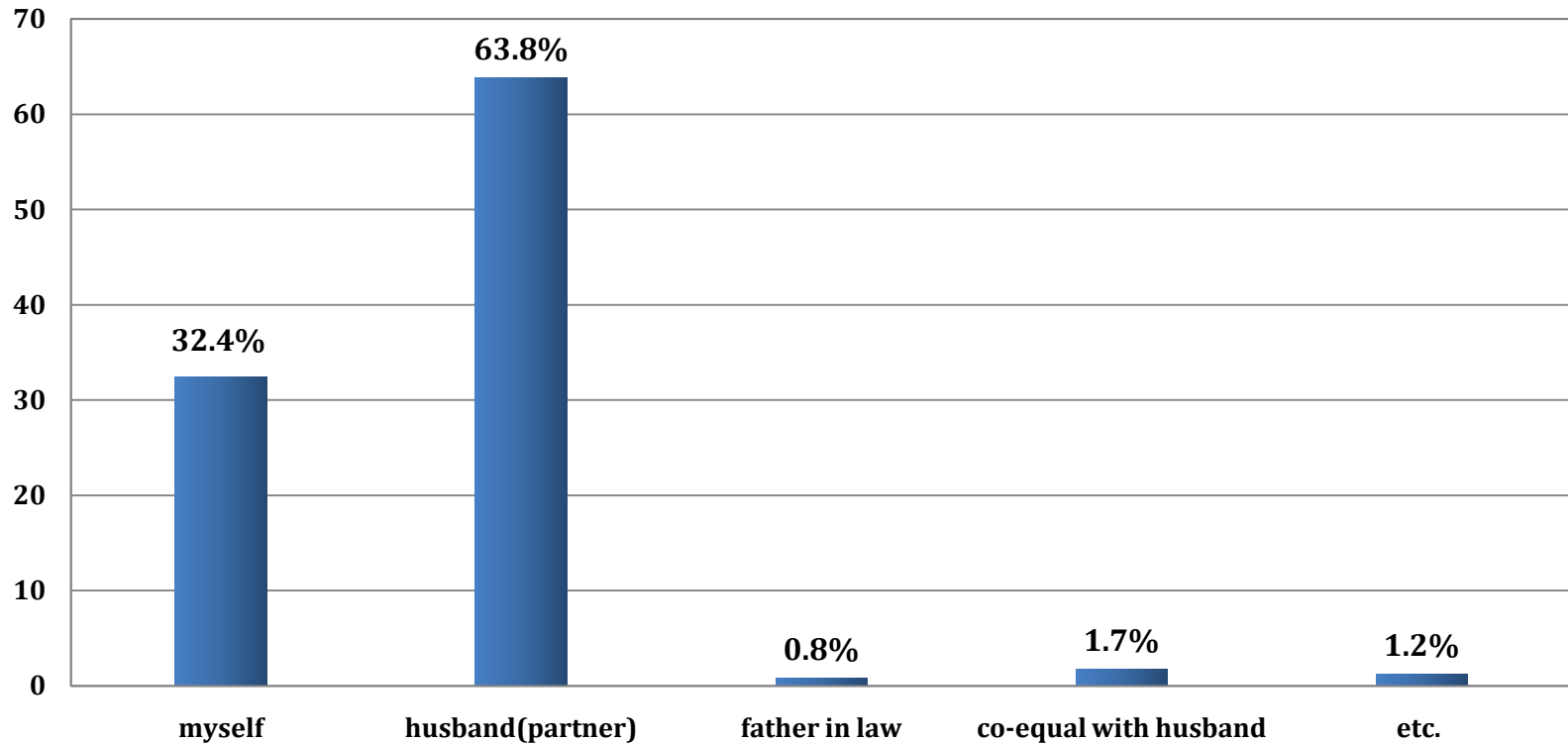


- Unsatisfied(including very unsatisfied) 40%> satisfied(including very satisfied) 24%
- Low income and pay is the main cause of the dissatisfaction

**3.**

**Suggestions for  
women's  
empowerment**

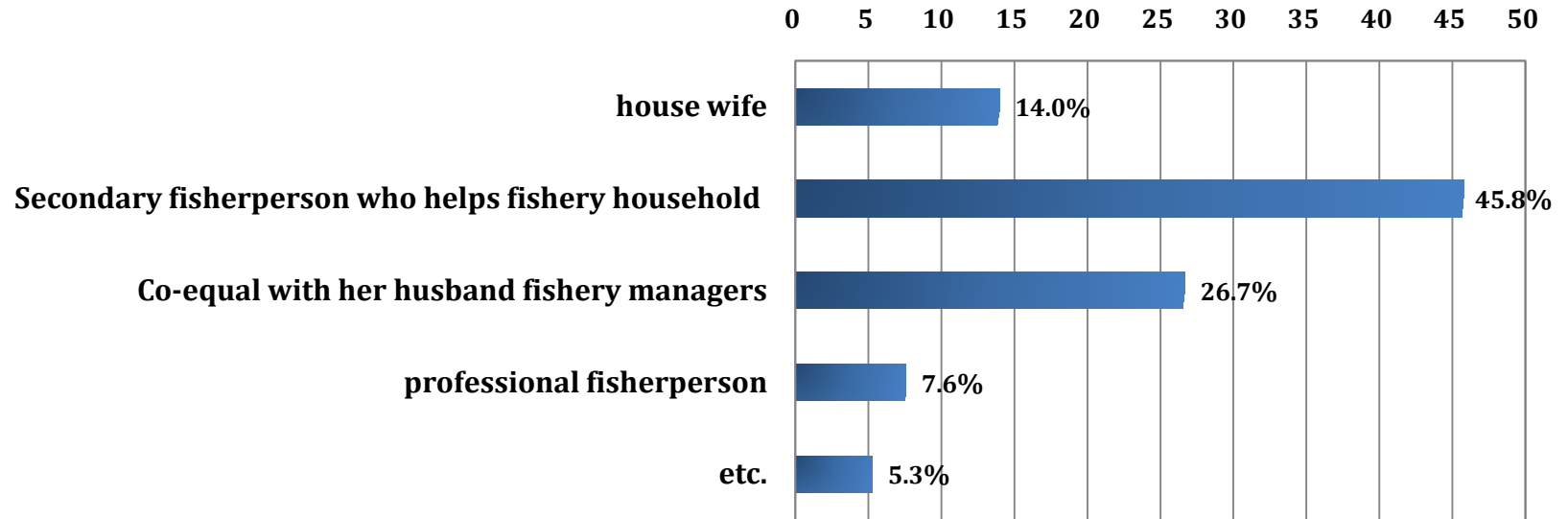
# 3-1. Fishery household manager



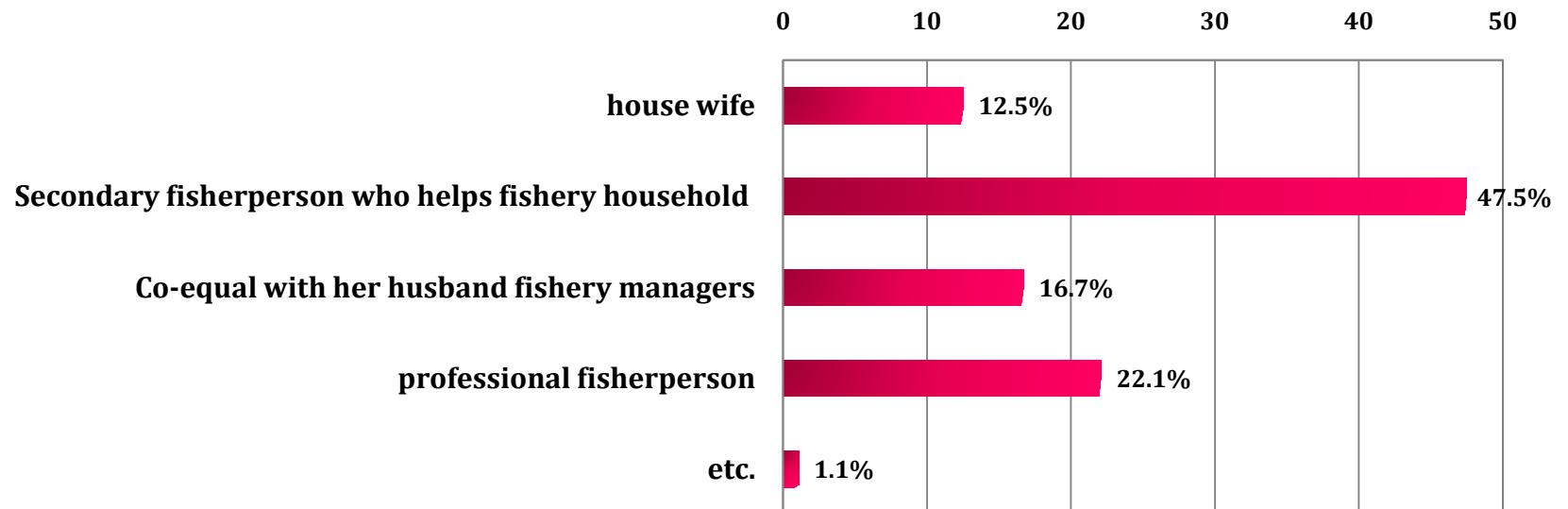
○ FHM : who is fully responsible for your own fishery?

# 3-2. Job identity & positioning(2005 VS. 2012)

2005

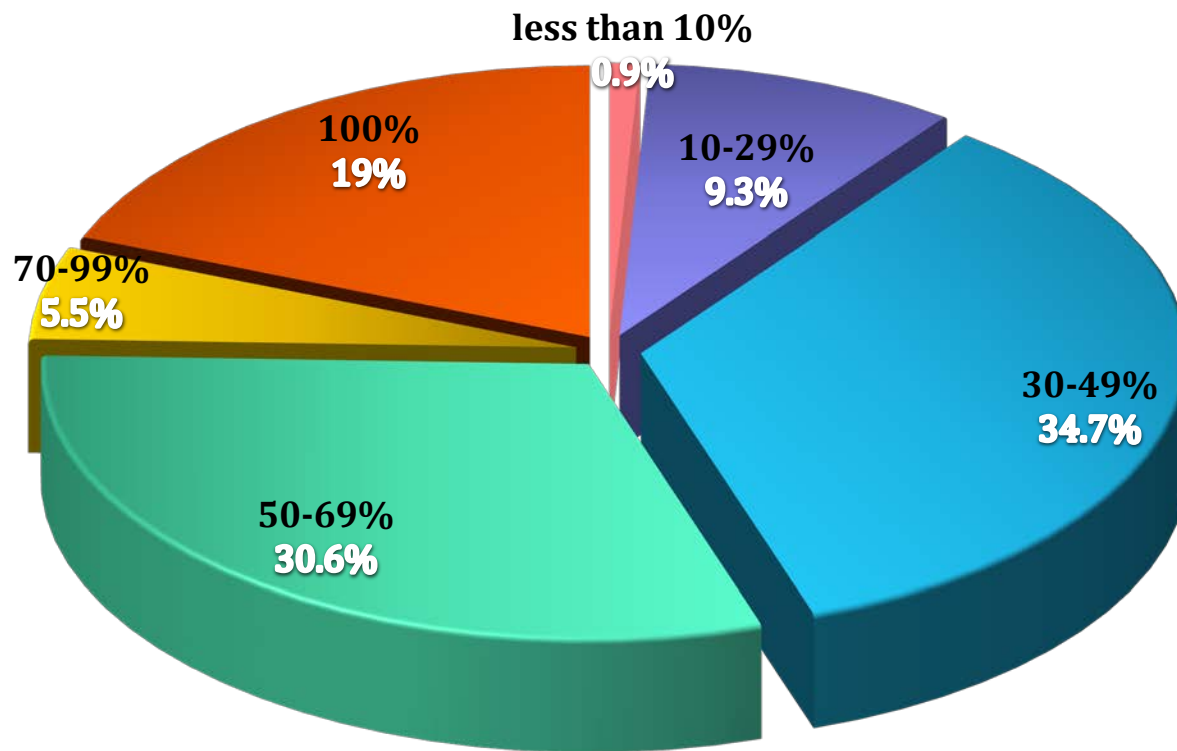


2012



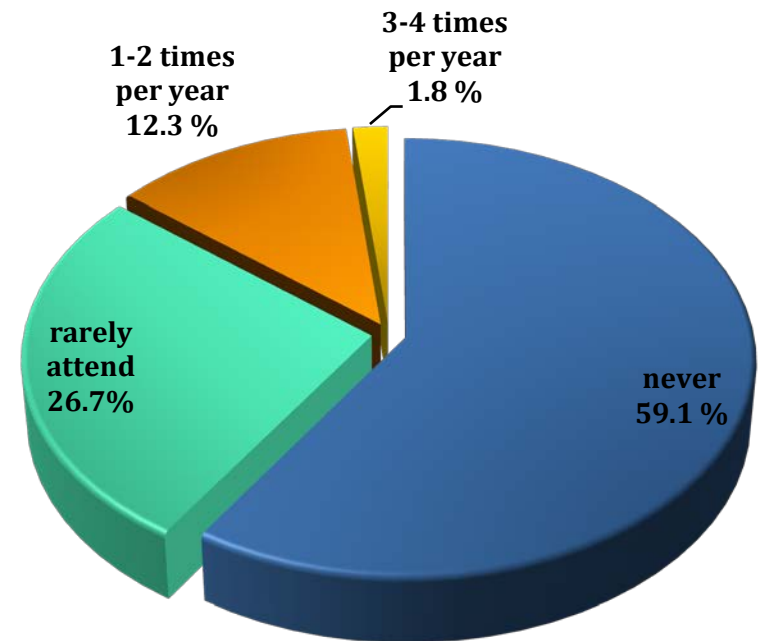
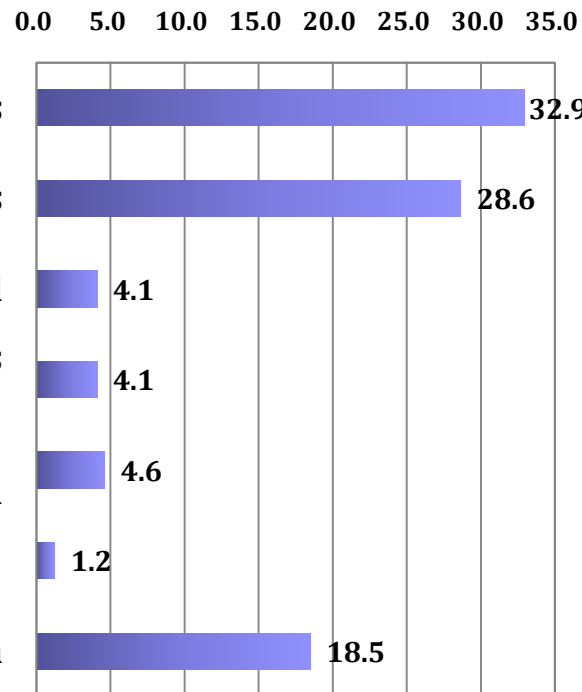


# 3-3. Contribution to household income (average 52.7%)



○ in spite of their big financial role, they accepted not themselves but male as representatives in fishery

# 3-4. Organizational subscription rate & Participation in education and training



○ the key to raising awareness of women's job identity and improving work environment is education and organization

**T**hank **Y**ou